

# SCHOOL NEWSLETTER

Term 2: Issue 10: 7 July 2022

Phone: 04 5284365

office@pinehaven.school.nz

absentees@pinehaven.school.nz

Bank Account: 12 3140 0337477 00



## Message from the Principal

Kia ora e te whānau,

As term 2 comes to a close, I have been reflecting on the very busy term we have had and how resilient we have all had to be to get through it! Resilience (*Manawaroa*) is one of our Pinehaven School Values and it has certainly been evident in many of us as we have navigated the term. Despite the challenges winter sickness and Covid presented, staff still managed to provide engaging learning activities for our tamariki. Special celebrations were enjoyed such as our Matariki events, experts visited to share their knowledge, for example; Jerome the performer who shared a variety Māori Musical Instruments. Students also had the opportunity to participate in a variety of sports events such as Junior Tough Guy & Gal and Interschool Cross Country just to name a few. Staff, students and whānau have been busy! You all deserve a well earned break to refresh and rest.

### Learning Conversations & Book Fair

Thanks to everyone who attended our recent Learning Conversations - we had a good level of attendance by families at these meetings which is fabulous. It is a great opportunity for the children to share their learning and to celebrate the work they are doing. I also want to say thanks to those of you who visited the Book Fair and made a purchase. The Book Fair is well worth the effort at our end, with us receiving a percentage of sales in books for our library. We are the very pleased recipients of approximately \$1,000.00 worth of books this year!

### School Assemblies & Gatherings

The cool start to the day today was a friendly reminder that winter is definitely upon us and with it, winter ills. As we know from recent news reports both influenza and Covid 19 are doing the rounds in our wider community. Even though current numbers of infection rates at our school are reasonably low, this can change very quickly, therefore we need to be cautious and prepared.

When New Zealand changed to the orange traffic light setting earlier in the year, we were able to resume many of our regular activities. School assemblies however have remained off the table. I still believe this to be the right course of action.

To allow other opportunities for sharing, the leadership team have decided to hold more regular hub assemblies throughout term 3. Parents are invited and welcome to come along to these smaller events. Dates and times of these assemblies can be found in the key dates section on the next page. We hope by keeping these gatherings smaller in size we can minimise spreading unwanted germs while also giving our children an opportunity to share.

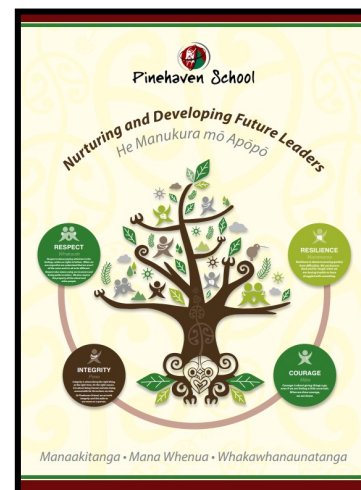
### Farewell

I would like to take this opportunity to wish Carol Elers-Nuku all the best as she leave us at the end of this term. Thank you for the contributions you have made to Pinehaven School in your time here. I have included a photo of Whaea Carol in action recently at the Upper Hutt Matariki Event. Ngā mihi nui Carol for all your mahi.

We are also farewelling Jude Clarke, one of our part-time teachers, this week. Jude has worked in room 4 this year. We wish you well for your retirement Jude, you will be missed.

I hope you all have a great couple of weeks ahead. Thanks for all your support this term.

Phillipa



# Key Dates

8 July	End of Term 2—3pm finish	9 August	Carter Observatory Trip—Room's 6 & 8
15 July	Board of Trustees Election — Call for nominations	10 August	Carter Observatory Trip—Room's 7 & 9
25 July	Term 3 starts	11 August	Silverstream Kindergarten visiting
	Mihi Whakatau for new families—9.10am Hall	12 August	Senior Hub Assembly 2.20pm— <i>Parents welcome</i>
29 July	Run club resumes for term 3	16 August	Board of Trustees Meeting—6.30pm <i>Staffroom</i>
1 August	Hands on Day @ Fergusson for Y6 students		Interschool Basketball
3 August	Board of Trustees Election—Nominations Close	7 September	Board of Trustees Election Day
5 August	Junior Hub Assembly 2.20pm— <i>Parents welcome</i>	23-24 September	Arts & Crafts Exhibition

# School News

**Arts & Crafts Exhibition** Friday 23rd & Saturday 24th September—*A message from the Arts & Crafts Exhibition Committee*

A reminder that our registrations close on the **8th July**. We still have some spaces available, so whether you are an established artist, maker, crafter or just someone who wants to give selling your creations a go, this is a great event for you. To register, just fill in the link in our newsletter email.

We are on the lookout for someone to run a **sewing bee** - we need to hem our calico tablecloths, and make some bunting. If you are able to help with this please email [pinehavenartandcraft@gmail.com](mailto:pinehavenartandcraft@gmail.com)

## Pinehaven School Running Club

Pinehaven Pacers is for students in Years 3-6 who love to run and want to work on their fitness. Our running club is organised by Katie Pettengell. Katie would love to have other helpers for run club so let the office know if you want to get in touch with Katie to volunteer, if you haven't already. Running Club will take place on the following dates; 29 July, 12 August, 26 August, 9 September, and 23 September.

## Access to Period Products

A reminder to those of you who this applies, please contact Pamela in the office if your daughter needs access to period products. See our last newsletter for more details.

# Advanced Notice!

**Onesie Day (Wellington Free Ambulance Appeal)** Friday 9th September  
**Teacher Only Day** Friday 21st October

