

# SCHOOL NEWSLETTER

Term 1: Issue 4: 24 March 2022

Phone: 04 5284365

office@pinehaven.school.nz

absentees@pinehaven.school.nz

Bank Account: 12 3140 0337477 00



## Message from the Principal

Kia ora e te whānau

You will be aware that yesterday the Prime Minister announced changes to the COVID-19 Protection Framework. Over the coming weeks new details will emerge about what this means for us and as a school we will make changes as directed by the MOE & MOH. Here at Pinehaven School the number of people who have had COVID-19 or who are isolating due to positive household members is steadily decreasing. As well as the Omicron wave potentially hitting it's peak, our improved hygiene practices have no doubt played a part in this. We continue to encourage mask wearing, hand washing and physical distancing. We do see light at the end of the tunnel and look forward to once again attending sports events, getting clubs up and running as well as hosting school assemblies when we are able to. Keep an eye out on our schools Facebook page for events and notices.

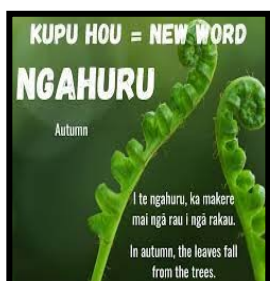
### Classroom Happenings—Turangawaewae - The place we stand

Te Awa (room's 3, 4 & 5) have made a huge map of our local area which shows Pinehaven, Silverstream and the hills around us! They have been adding our houses and local features—we will share more photos on seesaw. I had the pleasure of being invited into Te Awa and seeing the local area map go up on the wall. It was great to hear the students sharing their knowledge of our local area and to share this learning experience with Te Awa.



### Change in Season - Autumn

'The Māori name for autumn is ngahuru, an archaic word for ten. This was because in the traditional calendar autumn starts during the tenth month (February-March). Ngahuru is also the name for harvest, which occurs at this time of the year. The saying 'Ngahuru, kura kai, kura tangata' (harvest-time, wealth of food, the wealth of people) indicates that food is plentiful in autumn.' Thanks Whaea Carol for this explanation.



Along with the change of seasons comes the need to wear additional layers of clothing to school. The beautiful sunny days we have been enjoying here in Pinehaven are now beginning with cooler mornings and the occasional wet day. With this in mind this is also a good time to remind families to send along a change of clothes with children who like to venture outdoors and may become muddy or wet. Please check your child/ren's bags to ensure they have a change of clothes as we are not able to provide a change of clothes at school. We appreciate your help with this.

Enjoy your weekend, **Phillipa**

# Key Dates

4-7 April	Swimming at H20 (Juniors)	15 April	Easter Friday
11-14 April	Swimming at H20 (Seniors)	2 May	First day of term 2
14 April	Last day of term 1		

## New Students

A warm welcome to Marcus who has recently started school in Room 1. It is lovely to have you with us Marcus!

## School News

### Junior Tough Guy & Gal Challenge

Online registrations for the Junior Tough Guy & Gal Challenge are now open. This event is available for all students year 3-6.



The Junior Tough Guy & Gal Challenge is being held on **Wednesday 25th May** at Camp Wainui, 203 Coast Road, Wainuiomata.

If your child would like to attend the Junior Tough Guy & Gal Challenge please register them online. Follow the instructions on the information sheet sent home with this newsletter.

For further information go to the website [www.eventpromotions.co.nz](http://www.eventpromotions.co.nz) or email Callum [callum@pinehaven.school.nz](mailto:callum@pinehaven.school.nz) We are looking forward to having an outdoor fun event to look forward to.

### Swimming

Swimmings forms were emailed to families yesterday. To help with our organisation and to gain parental permission, we need these forms filled out as soon as possible. For swimming to go ahead we will need parent support, please indicate on the form if you are able to help. Thanks in advance!



### Rubbish & Recycling at Pinehaven School

As an Enviroschool we work hard to limit our waste and recycle what we can. Unfortunately on more than one occasion this year, we have had household rubbish dumped in our recycling bin and items left on the ground next to our skip bins. Please help us by politely discouraging members of the Pinehaven community from dumping rubbish in our school bins. We don't want to have to 'police' this and hope this visual reminder will encourage people to do the right thing.

This Recycle Bin is for  
**Pinehaven School use only.**

Please do not use for household rubbish.



## Books to Tonga

The donated books from Pinehaven School are identified and packed in cartons ready to go to Tonga. The 4 pallet consignment will be dispatched in April.

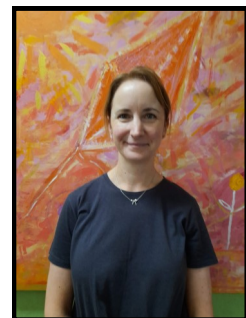


Many thanks from Chris, on behalf of Book Fest and Hutt River Valley Rotary.

## Introducing The Team!

### Nadine Duncalf—Classroom Teacher—Te Wai (R1)

Nadine has worked at Pinehaven School for 6 years, initially in a part-time capacity and in more recent years as a full time teacher. Nadine is also mum to Piper and Edward. She works in Te Wai, based in Room 1, welcoming our newest children to school.



### Patricia Hvid—Classroom Teacher Te Awa (R3)



Patricia has worked at Pinehaven School since the beginning of 2012 when she started her teaching career. She has worked across the school teaching children from Years 1-4 and currently works in Te Awa with our Year 2/3 students. Patricia also leads our Capabilities Curriculum Team.

### Kate Beaumont-Yee—Classroom Teacher Te Awa (R5)

Kate has been associated with our school since Ted (her eldest child) started school in 2011. She started teaching here in 2015 and has taught across most of the year levels. Kate is the teacher who has oversight for our EnviroSchools work and is also responsible for the amazing murals around the school.

