

SCHOOL NEWSLETTER

Term 2: Issue 9: 23 June 2022

Phone: 04 5284365

office@pinehaven.school.nz

absentees@pinehaven.school.nz

Bank Account: 12 3140 0337477 00



Message from the Principal

Kia ora e te whānau,

What a wonderful start to the day it was yesterday at our Matariki Celebration! Thank you to the large number of whānau who came along to share in our early morning start. Listening and watching our tamariki take centre stage in these celebrations with so many supportive family members present was special for all involved. Many thanks also to our staff for supporting our students in the lead up to this event, learning waiata and all the additional learning which took place during our school-wide rotations focused on the nine stars of Matariki. Students and teachers have loved these rotations and mixing up their normal morning routine.

The photo to the right, shows Room 8's students in front of the tree they created with forest birds and creatures to celebrate the Matariki star, 'Tupu-a-rangi'. If this star is shining brightly it means a good year for fruits and birds.

Reports

As mentioned in our recent email communication, mid-year reports are accessed via the parent portal. If you need help accessing the parental portal, contact Pamela in the office or via email office@pinehaven.school.nz. We will not be able to send parent portal details over the weekend. Mid-year reports are due out today at 3pm.

Learning Conversations

Learning Conversations will take place next week. This is an important meeting that all families should attend. Your child will participate in this meeting, they will share their learning information with you and discuss their goals. Please book your child/s interview by accessing www.schoolinterviews.co.nz and entering event code **2bu53**, then follow the prompts. The online system is now open. This is the quickest and most efficient way to book an appointment that is the best for you. If you have more than one child and want to maximize your 15 minutes, please don't book back to back interviews.

Staffing

The Board has received the resignation from one of our teaching team. Carol Elers-Nuku has informed us she is taking a position at Te Kura o Haukaretu (formerly known as Maoribank School) in the full immersion unit. We know Carol will be a wonderful asset to Te Kura o Haukaretu tamariki and whānau as she works in an area she is so passionate about. We have loved having Carol back on our team for the past two terms and wish her all the best in her new role.

At the end of this term we will also be farewelling Jude Clarke. Jude has provided release for teachers, most recently one day a week in the junior school. We will miss Jude, her bubbly personality and vast teaching experience. Thank you Jude for all you had added to Pinehaven School over the past two and a half years.

Kia pai te wiki hararei o Matariki, safe travels to those venturing away.

Take care,

Phillipa



Key Dates

24 June	Matariki Public Holiday - School closed
29 June	Learning Conversations—School closes at 2pm
30 June	Learning Conversations—School closes at 3pm
27–30 June	Scholastic Book Fair — In school library
8 July	End of Term 2
25 July	First Day of Term 4

School News

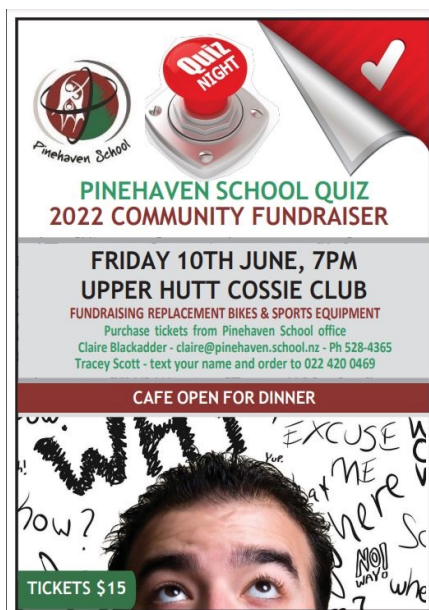
Quiz Night Sponsors

It was great to see many of you at our Quiz Night last Friday night. Thank you to the Quiz Night Committee, and in particular Tracey Scott for her organisation of this event. Fundraising events of this magnitude are a big commitment and we appreciate the time and effort put in to make it happen. The total money raised was \$3,587.90 and we intend using this money to purchase new bikes.

Thanks also to our amazing sponsors for supporting the Quiz Night. Without your support, our fundraiser would have been hard to proceed.

Special thanks to:

My Day Spa
Mane Hair Salon Wgtn
Boneface Brewery
Pet Vet
Stihl Shop
Cossie Club
Silverstream Pharmacy
Silverstream Bakery
Bluebridge
Interislander
Repco
Fig Tree cafe
Bud Florist
Staglands
YMCA
Silerspoon Restaurant
Silverstream Espresso
Prodrive Golf
Dye Pretty Hairdressers
Cake Haven
H2O
Miro Cinema
Newbolds Upper Hutt
Bed Bath and Beyond
Farrahs
New World
Pak n Save Upper Hutt
Mexicano Corn Chips
Whittakers
Mobil



Reminders

Scholastic Book Fair— Times & days

Come along to our Pinehaven School library to see the wide variety of books for sale.

The fair is open from:

Monday & Tuesday: 3-4pm

Tuesday, Wednesday, Thursday & Friday: 8.30-9am

Wednesday & Thursday: 3-7pm

New Students

A warm welcome to Abby who started school in Room 1 this week. It is lovely to have you joining our school!

Introducing The Team!



Kelsey Adin
Part-time Teacher

Kelsey teaches part-time, providing release for teachers across the school. Many of you will remember Kelsey from previous years. She has returned to part-time work after having had her second child. It is great to have Kelsey working with us once again.

Advanced

Arts & Crafts Exhibition Friday 23rd & Saturday 24th September

Teacher Only Day Friday 21st October

Staff Absence during winter

The recent weather has made it abundantly clear that winter is upon us. With that, the usual winter illnesses are starting to do the rounds. With this in mind, I wanted to inform our school community that if we cannot get a reliever for classes or cover from leadership, we will need to split classes. This is a last resort however it may be required. Thanks in advance for your understanding.

Four Eyes Foundation—REMINDER

The Four Eyes Foundation is a registered charity that helps identify and treat eye sight problems that can affect your child's learning and development. On Tuesday 5th July, Four Eyes will be onsite to screen all students at Pinehaven School. More information about this is attached in a flyer. **If you do not wish your child to be screened please let Pamela know**